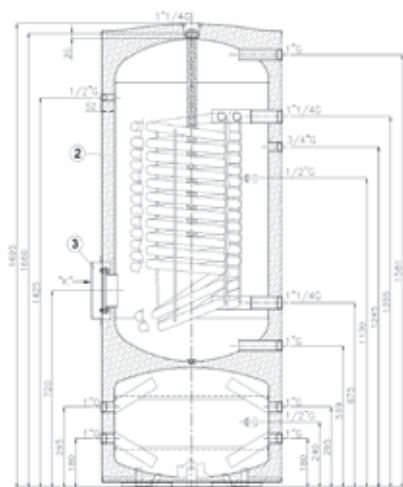


BOILERS FOR HEAT PUMPS



Main tank features:

- Construction material S235JR;
- DHW tank with internal vitrification as per DIN 4753 p.3
- Surface Coil 3.2 m²
- Heat exchanger maximum working pressure: 10 bar
- DHW tank maximum working pressure: 10 bar
- Puffer maximum working pressure: 3 bar
- Maximum temperature: 95°C
- Maximum heat-exchanger temperature: 110°C
- Heat exchange surface: as per attached diagram
- External burnishing
- Flange plate Ø 170

Main insulation features:

- External insulation with direct PU injection, thickness 50mm, minimum guaranteed density
- 40 kg/m³, external PVC finish, RAL 9006 grey, complete with pipe rosettes and black covers.

MODEL		300
BOILER SPECIFICATIONS		
boiler capacity	Litres	300
max. working pressure	bar	10
max. temperature	°C	95
Total height	mm	1695
outer diameter (with insulation)	mm	700
inner diameter (without insulation)	mm	600
PUFFER SPECIFICATIONS		
puffer capacity	Litres	100
max. working pressure	bar	3
max. temperature	°C	95
COIL SPECIFICATIONS		
coil capacity	Litres	18.5
coil heat exchange surface	m ²	3.2
max. working pressure	bar	10

CODE	PRODUCT	PRICE (€)
8TB000330	Combined boiler 300 l DHW and 100 l water for heating - HEAT PUMP	
8TB000331	Removable coil for DUO 300 / 100 l - 0.9 m ²	