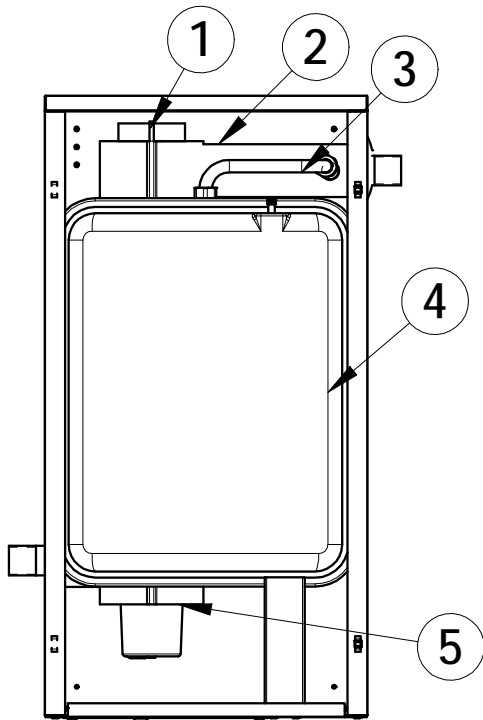


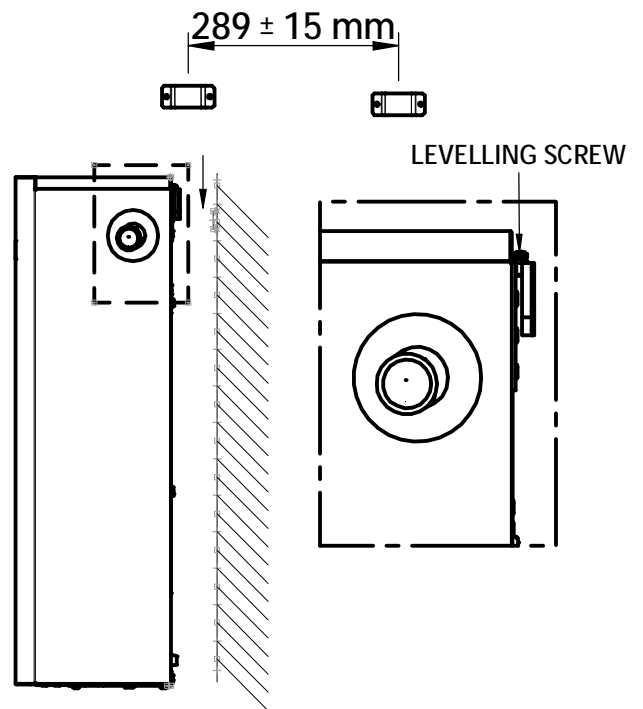
HP HIDRAULIC KIT

COMPONENTS:



1. Manual Air vent valve
2. Heat exchanger
3. Expansion vessel pipe
4. Expansion vessel
5. Electric heater

INSTALLATION:



- Fix the brackets supplied with the kit to the wall.
- Hang the kit on the brackets and level using the levelling screws.

ELECTRICAL CONNECTION:

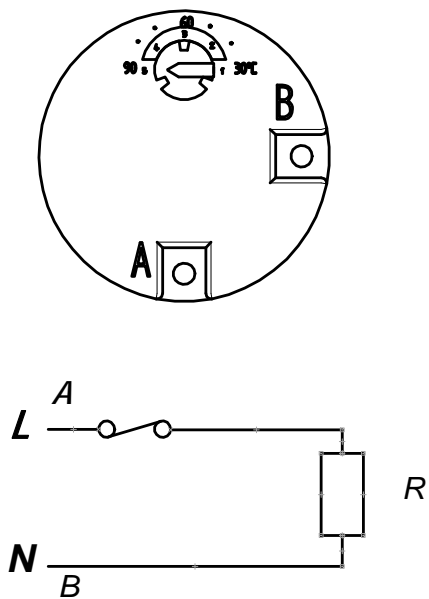
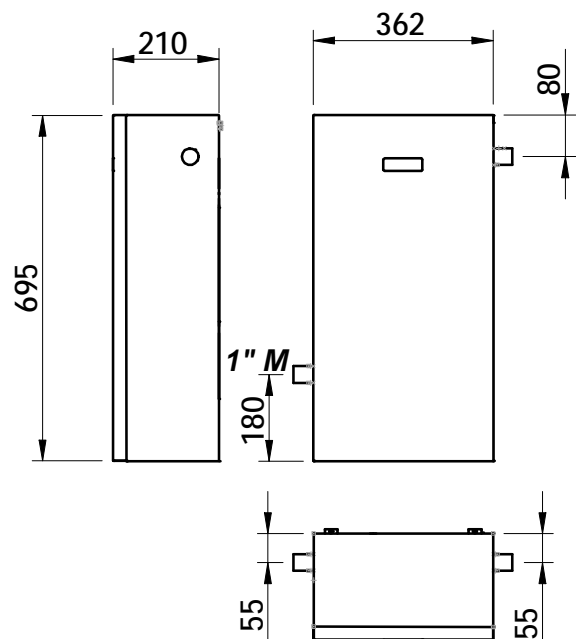


DIAGRAM AND MEASUREMENT:



TECHNICAL CHARACTERISTICS:

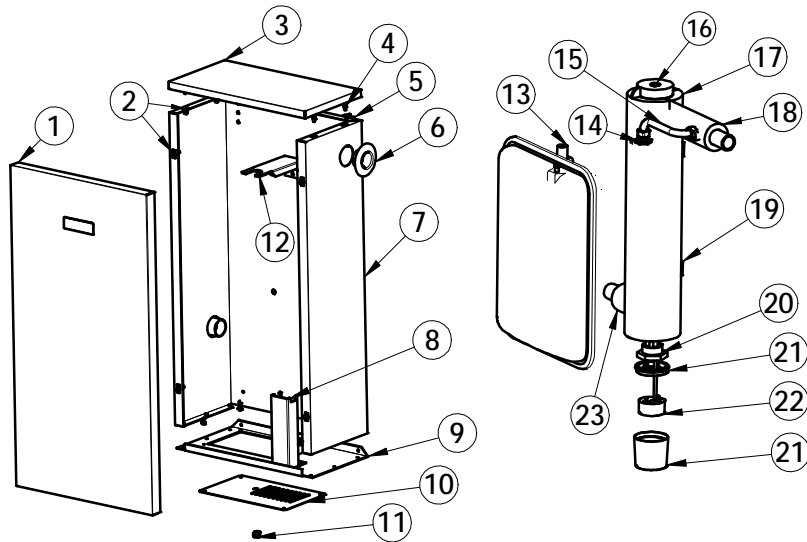
Maximum Power: 2500 W.

Maximum consumption: 1,9 A.

Electricity

Voltage: 230 V~

SPARE PARTS:



N.º	CODE	DESCRIPTION	QUANT.
1	SEPO002896	DOOR	1
2	CFER000261	SPRING CLOSURE	8
3	SEPO002897	TOP COVER	1
4	CTOE000346	HEXAGONAL M8 CLIP	8
5	GFER000000	HUNGER	2
6	CFER000086	1" BLACK TRIM	2
7	SEPO002895	BACK COVER	1
8	SCHA012276	EXPANSION VESSELS INFERIOR HUNGER	1
9	SEPO002898	BASEBORD	1
10	SEPO002899	ACCES COVER	1
11	CFER000033	CABLE GROMMET	1
12	SCHA012274	EXPANSION VESSELS SUPERIOR HUNGER	1
13	CFOV000005	12 LTS EXPANSION VESSEL	1
14	CFOG000023	HEXAGONAL LOCKNUT 1/2	1
15	SCOB012849	EXPANSION VESSEL PIPE	1
16	CFOV000034	MANUAL 3/8" AIR VENT VALVE	1
17	CAIS000025	HEAT EXCHANGERS INSULATION	1
18	CACU000108	PIPE INSULATION 35x19	1
19	SCON001652	HEAT EXCHANGER	1
20	CRES000026	2500W ELECTRICAL HEATER	1
21	CRES000014	HEATER GASKET AND HEAD COVER	1
22	CRES000015	THERMOSTAT 270mm (30-90°C)	1
23	CACU000108	PIPE INSULATION 35x19	1

