

Thermomatic EC Home

sustainable
energy
solutions



Termoventiler

THERMOMATIC® EC HOME

Easy-to-use mixing valve automation, with ten different control options – for one or two heating circuits.



Actuator and connection centre with control panel/room sensor

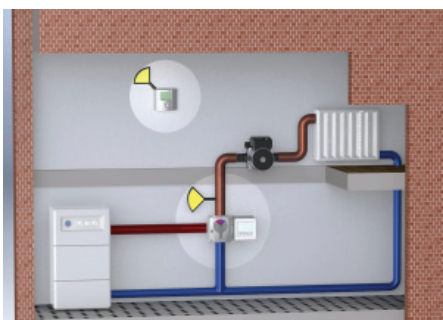


Control two heating circuits from one control panel

The equipment makes it possible to:

- Change regulation or upgrade to wireless without changing equipment.
- Use day and night temperatures.
- Receive an alarm if temperature is too high or too low and in case of sensor error.
- Use external control, e.g. a GSM module, to control temperature.
- Control the circulation pump and additional heating through a relay box.
- Limit access and viewing data for unauthorised persons.
- Read history of indoor, outdoor and supply temperatures.

Control with room sensor or supply pipe sensor alone



Control with room sensor

This gives the most efficient and easiest control function in a single family dwelling or premises with uniform heating needs.

Easy installation/operation and optimum heating economy.

Art.No. 12 15 01

Thermomatic EC Home, complete with room sensor.

Art.No. 12 15 02

Thermomatic EC Home WL, as above, with wireless room sensor.



Control with supply pipe sensor

EC Home will keep a constant supply pipe temperature, adjustable 0-90°C.

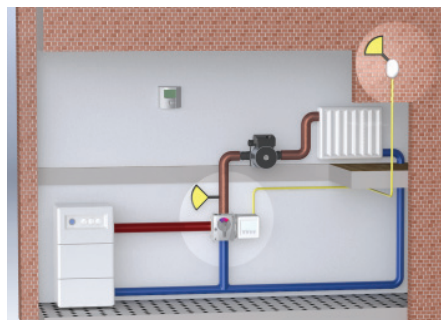
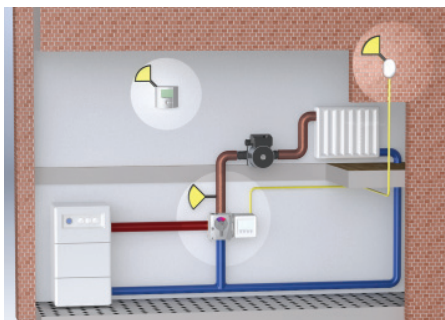


Art.No. 12 15 01



Art.No. 12 15 02

Control with outdoor sensor



Control with room and outdoor sensor

Easy to choose which control option to use.

- RO_r means that the room sensor decides the temperature at first. Higher heating comfort is achieved with outdoor sensor controlled max. and min. temp. limits. Used mainly in a family house or premises with uniform heating needs.
- RO_o means that the outdoor sensor controls the heating according to set control curve. The room sensor is used to prevent unnecessary high room temperature. Used mainly for regulation in multi-occupancy buildings.

Art.No. 12 15 07

Thermomatic EC Home RO, complete, with room and outdoor sensor.

Art.No. 12 15 04

Thermomatic EC Home WLO, as above, incl. wireless room sensor.

Control with outdoor sensor

For control in multi-occupancy buildings. The outdoor sensor controls the heating according to the set control curve.

Art.No. 12 15 03

Thermomatic EC Home O, complete with outdoor sensor.

Art.No. 12 15 04

Thermomatic EC Home WLO, as above, incl. wireless room sensor.



Art.No. 12 15 07

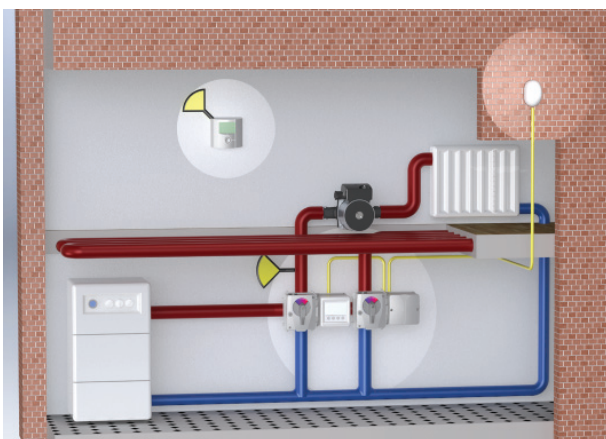


Art.No. 12 15 04



Art.No. 12 15 03

Control of two circuits



Control of two heating circuits

Art.No. 12 15 05

Thermomatic EC Home 2K, expansion package for two circuits, without control panel, incl. actuator. Incl. cable for connection to standard package.

Art.No. 12 15 06

Thermomatic EC Home WL 2K, wireless expansion package for two circuits, without control panel, incl. actuator, with wireless room sensor. Incl. cable for connection to standard package.

Accessories

Art.No. : 12 70 02

Passive room sensor, incl. 25 m 2-wire cable.

Art.No. : 12 70 03

Relay box for control of circulation pump and add. heating.



Art.No. 12 70 02



Art.No. 12 70 03



Art.No. 12 15 05



Art.No. 12 15 06



Termoventiler AB
Nolhagavägen 12
SE-523 93 Marbäck
Sweden

Tel. +46 (0) 321 261 80
info@termoventiler.se

TV Termoventiler GmbH
Chemnitzer Straße 71
DE-09212 Limbach-Oberfrohna
Germany

Tel. +49 (0) 3722 50 57 00
info@termoventiler.de



termoventiler.eu